

Specifications

	55VH7B	
PANEL	Screen Size	55
	Panel Technology	IPS
	Aspect Ratio	16 : 9
	Native Resolution	1,920 x 1,080 (FHD)
	Brightness	700cd/m²
	Contrast Ratio	1,400:1
	Dynamic CR	500,000:1
	Viewing Angle (H x V)	178 x 178
	Response Time	8ms (G to G)
	Surface Treatment	Hard coating (3H), Anti-reflection treatment of the front polarizer (Reflectance < 2%)
	Life time (Typ.)	60,000 Hours
	Guranteed Operating Hour	24 Hours
	Orientation	Portrait & Landscape
	Input	HDMI, DP, DVI-D, OPS, Audio, USB 2.0, USB3.0, RGB
CONNECTIVITY	Output	DP, Audio
	External Control	RS232C, RJ45, IR Receiver
	Bezel Color	-
PHYSICAL SPECIFICATION	Bezel Width	0.9mm (Top/Bottom/Left/Right even bezel) / 1.8mm *B to B : Panel Bezel + Panel Bezel
	Monitor Dimension (W x H x D)	1,211.4 x 682.2 x 86.5mm
	Weight (Head)	18.6kg
	Carton Dimensions (W x H x D)	1,353 x 855 x 263mm
	Packed Weight	25.3kg
	VESA™ Standard Mount Interface	600 x 400mm
SPECIAL FEATURES		Temperature Sensor, Tile Mode (up to 15x15), Natural Mode@Tile Mode, Energy Saving, Smart Energy Saving, File Play with USB, Internal Memory, Wi-Fi Dongle Ready, USB Cloning, Content Scheduling, Fail Over
ENVIRONMENTAL CONDITIONS	Operating Temperature Range	0 °C to 40 °C
	Operating Humidity Range	10 % to 90 %
POWER	Power Supply	100-240V~, 50/60Hz
	Power Type	Built-In Power
POWER CONSUMPTION	Typ.	220W
	Smart Energy Saving	110W
STANDARD (CERTIFICATION)	Safety	UL / cUL / CB / TUV / KC
	EMC	FCC Class "A" / CE / KCC
	ErP / Energy Star	NA / Yes (Energy Star 6.0)
MEDIA PLAYER COMPATIBILITY	OPS Type Compatible	Yes
	ExternalMediaPlayerAttachable	Yes (MP500/MP700)
SOFTWARE COMPATIBILITY	SuperSign-W/Lite	Yes
	SuperSign-C	Yes
ACCESSORY	Basic	Remote Controller, Power Cable, DP Cable, Manual, IR Receiver, RS-232C Cable, LAN Cable, Guide Bracket, Screw
	Optional	Wall Mount (Landscape : WM-L640V, Portrait : WM-P640V), OPS Kit (KT-OPSA), HDBaseT (EB-B100)

Artistic Immersion, Overwhelming Attractiveness
World’s Narrowest Bezel Video Wall 55VH7B



With its borderless design, the VH7B series offers maximum immersion for video walls. Its quad-core SoC plays various types of content without the need for an extra media player due to its efficient management tools. The VH7B effectively raises customer awareness, particularly in areas with heavy foot traffic such as museums, galleries, and large retail stores.

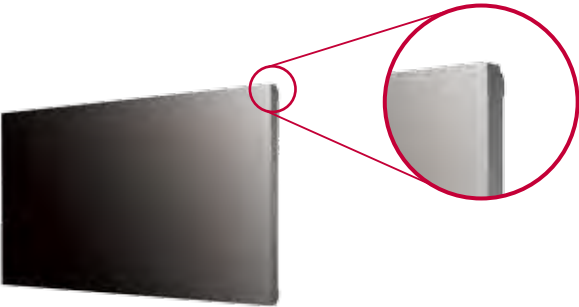
Key Features

Borderless Design



Narrowest Bezel

Borderless design with its 0.9mm even panel bezel* enables immersive and seamless viewing experiences on assembled video wall screens.



*Panel Bezel :
The black matrix section where an image is not displayed on the front panel.

Smart Platform



Built-in SoC* and Synced Playback

The optimized built-in quad-core SoC in the VH7B can play various content formats and eliminates the need for an external media player. Using its built-in SoC, each display plays its video tile without lag for synchronized content playback.

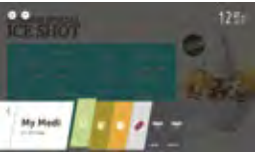


*System-on-Chip

- CPU**
1.2GHz Quad Core CPU
- Memory**
2.5GB double data 3 (DDR3) 32bit memory
- GPU**
550MHz video processor with full codec (WMV, MP4, HEVC, VP9, and H.264 capabilities)
- Internal Memory**
A storage of 8GB (4GB is occupied by system)

webOS 2.0

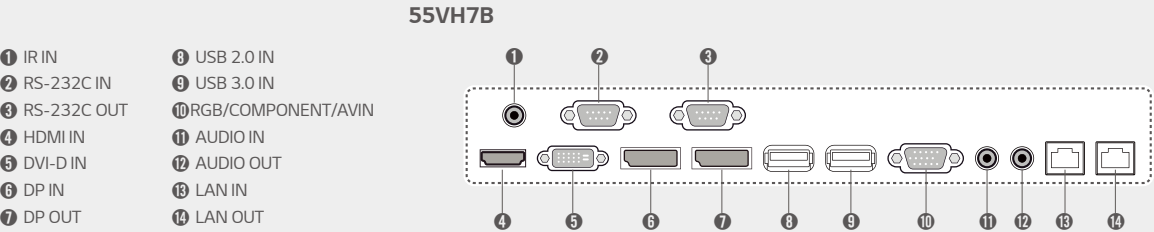
The webOS 2.0 platform provides easy and convenient tools to create contents. LG's SDK* and technical supports make content development and management easier.



<http://developer.lge.com/webOSSignage>

*Software Development Kit

Connectivity



Download LG Commercial Display Mobile App



More info www.lgcommercial.com
You [YouTube](https://www.youtube.com/c/LGCommercialDisplay) [youtube.com/c/LGCommercialDisplay](https://www.youtube.com/c/LGCommercialDisplay)

LG may make changes to specifications and product descriptions without notice.
Copyright © 2015 LG Electronics Inc. All rights reserved. "LG Life's Good" is a registered of LG Corp.
The names of products and brands mentioned here may be the trademarks of their respective owners.



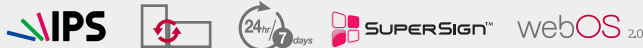
Artistic Immersion, Overwhelming Attractiveness

World's Narrowest Bezel Video Wall 55VH7B



Screen Size
55"

- 55VH7B
- Brightness : 700cd/m²
 - Bezel : 0.9mm (T/B/L/R even bezel)
 - Depth : 87mm
 - Interface : HDMI / DVI / RGB / IR, Daisy-chain (DP, RS232C, RJ45)

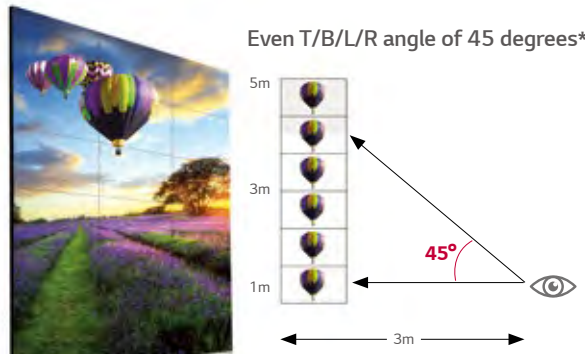


Key Features

Superior Picture Quality

Clear Viewing Angle

The VH7B ensures clear picture quality even when installed in stacks of more than four. This is very favorable for the quantity of video walls installed in large spaces.



*The angle from the center of the screen to have 50% of the initial luminance.

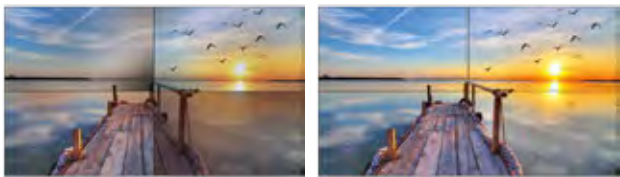
Uniform Brightness

LG's LED backlight technology guarantees high uniformity in brightness to ensure a clear picture. On other screens, certain spots may appear darker than others, but the new VH7B generates high visibility and a consistent brightness across the whole screen.



Video Wall Image Creation

Through Video Wall Image Creation (VIC) technology, color and brightness differences are compensated in circuit part with an algorithm to make the panels into a same characteristic so that each video wall maintains the consistent white balance.

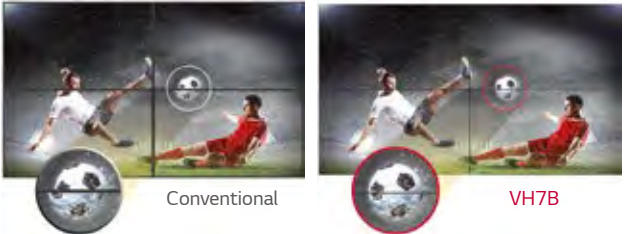


Conventional

VH7B

Image Gap Reduction

The VH7B includes an image improvement algorithm that can adjust to objects located in the boundary of bezel for a seamless viewing experience.



Conventional

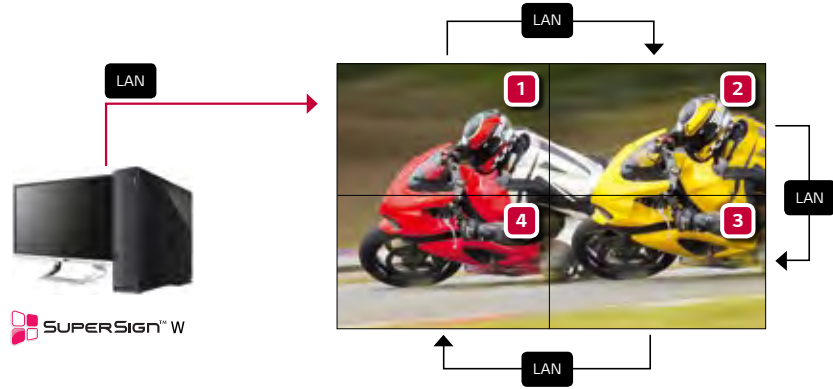
VH7B

* This function is applied to models produced in Feb, 16.

Enhanced Content Management

LAN Daisy Chain Performance

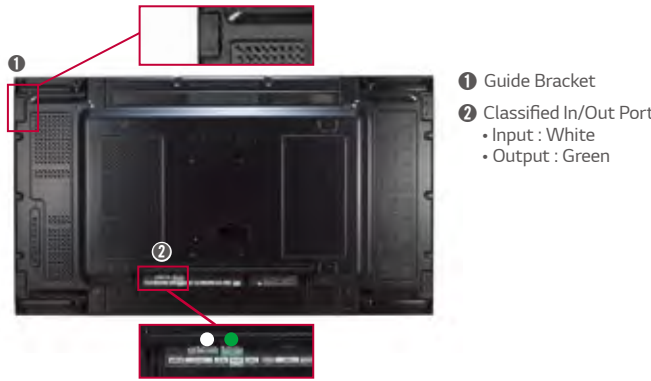
ALAN daisy chain allows you to execute commands to control and monitor the screens and even update their firmware.



Convenient Options

Guide Bracket / Classified Port

A guide bracket is an attachment that ensures the video wall remains flat. The classified in/out port prevents errors when connecting a daisy chain.



Control Buttons

With 8 control buttons, it's easy to operate various functions of the VH7B, such as controlling the OSD (OnScreenDisplay) and changing the input source.



Dimension (unit : mm)

55"

1,211.4 x 682.2 x 86.5 /
18.6kg

